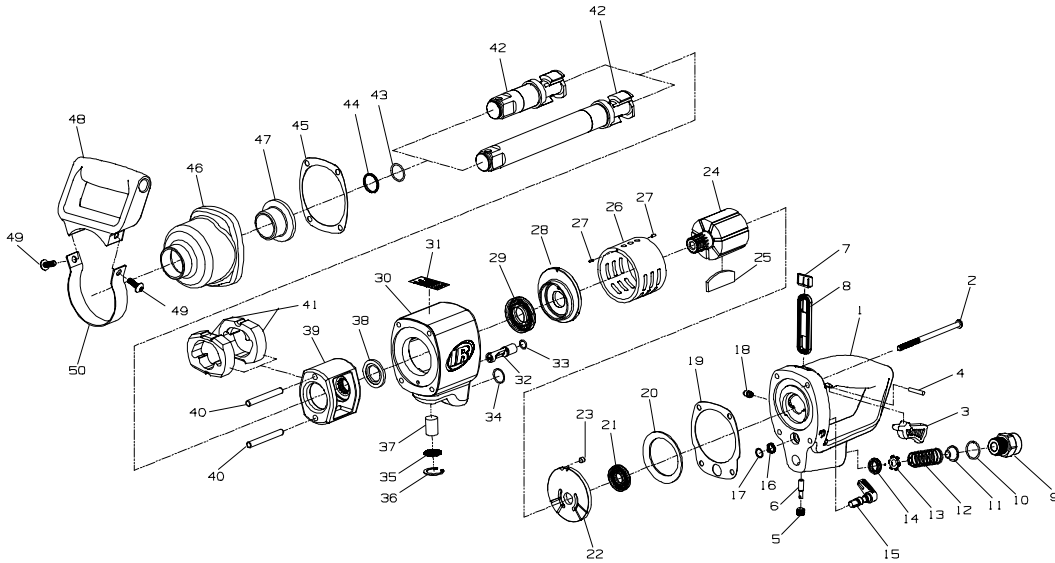


**VEDLIGEHOLDELSESVEJLEDNING
SKÖTSELRÅD
VEDLIKEHOLDSINSTRUKSJONER
HUOLTO-OHJEET
INSTRUÇÕES DE MANUTENÇÃO
ΟΔΗΓΙΕΣ ΣΥΝΤΗΡΗΣΕΩΣ**



(TPA1734-1)



BESTILLINGSNUMMER
BESTÄLLINGSNUMMER
BESTILLINGSNUMMER
OSANUMERO TILAUSTA VARTEN
NÚMERO DA PEÇA PARA ENCOMENDAS
ΑΡΙΘΜΟΙ ΠΑΡΑΓΓΕΛΙΑΣ ΕΞΑΡΤΗΜΑΤΩΝ

1	Handle	2080-92	32	Reverse Valve	2161-329
2	Handle Bolt (4)	2080-638	33	O-ring	023446
3	Trigger	2080-93	34	Housing O-ring	C321-606
4	Trigger Pin	534-265	35	Exhaust Cover	2080-123
5	Plug	2080-34	36	Exhaust Cover Snap Ring	3CS5492-28
6	Plunger Pin	2080-120	37	Muffler	2080-310
7	Cap	2080-95	38	Hammer Frame Washer	2161-706
8	Trigger Plunger	2080-94	39	Hammer Frame	2925-703
9	Inlet	2080-465	40	Hammer Pin	2910-704
10	O-ring	R4-210	41	Hammer (2)	2925-724
11	Screen	834-61	42	Anvil	
12	Spring	2080-51		for 2080 (standard length)	2080-A726
13	Throttle Valve	2921-302		for 2080-6 (6" extended length)	2080-A826-6
14	Throttle Valve Seat	DG230-303	43	Socket Retainer O-ring	BBFM-557
15	Reverse Lever	2080-658	44	Socket Retainer	910E5-918
16	Reverse Lever Spring	2080-278	45	Hammer Case Gasket	2161-36
17	Snap Ring	2161-28	46	Hammer Case Assembly	
18	Grease Fitting	R1-188		for 2080	2161-A727
19	Handle Gasket	2161-739		for 2080-6	2080-A727
20	Motor Clamp Washer	2161-207	47	Hammer Case Bushing	
21	Rear Rotor Bearing	4E-510		for 2080	2161-641
22	Rear End Plate	2161-12		for 2080-6	2080-641A
23	End Plate Dowel	2920-74		Auxiliary Handle Assembly	2080-A48
24	Rotor	2080-53	48	Auxiliary Handle	2080-48
25	Vane Packet (set of 7 Vanes)	2925-42-7	49	Bolt (2)	2080-49
26	Cylinder	2925-3	50	Strap	2080-364
27	Cylinder Dowel (2)	JC3350-538	*	Tune-up Kit (includes parts 10, 11, 12, 13, 14, 19, 21, 25, 29, 33, 34, 37, 43, 37, 43, 44 and 45)	2080-TK1
28	Front End Plate	2161-11			
29	Front End Bearing	834-24			
30	Motor Housing	2925B-A40			
31	Warning Label	WARNING-2-99			

* Not illustrated.